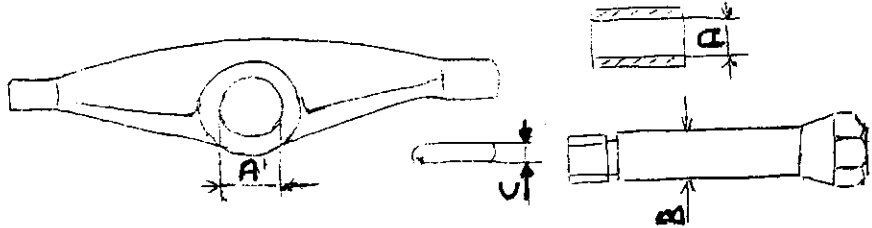


TABLE No. 8

Principal data of rocker-arms and relative pivot pins.



COUPLING WITH BUSHING

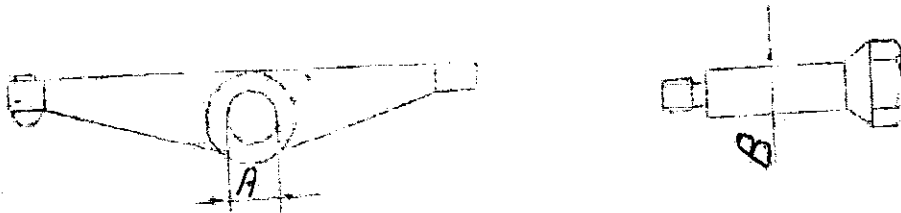
| | | | |
|-------------|-------------|-------------------|------------------|
| ENGINE TYPE | A diameter: | } specified | mm 12.00 + 12.02 |
| | | } wear limit | mm 12.04 |
| 175cc L.V. | B diameter | } specified | mm 11.98 + 11.99 |
| 175cc S | | } wear limit | mm 11.96 |
| 175cc SDS | A-B play | } specified | mm 0.01 + 0.04 |
| | | } allowance limit | mm 0.06 |

COUPLING WITH ROLLERS

| | | | |
|-------------|-------------------|--------------|------------------|
| ENGINE TYPE | A diameter | } specified | mm 13.977+13.988 |
| 250cc S | | } wear limit | mm 14.01 |
| 250cc SDS | B diameter | } specified | mm 9.99 + 10.00 |
| | | } wear limit | mm 9.97 |
| | C roller diameter | } specified | mm 2.00 |
| | | } wear limit | mm - 1.98 |

TABLE No. 6

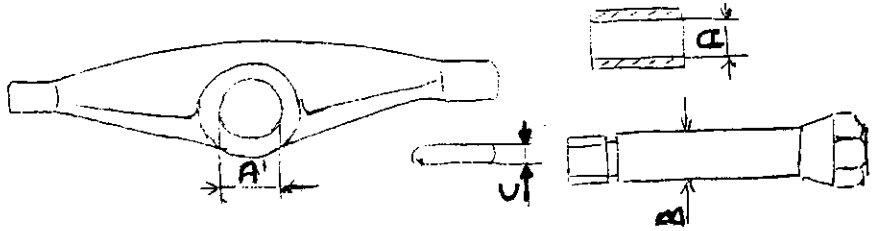
Principal data of rocker-arms and relative pivot pins



| | | | | |
|---------|------------|-----------------|----|---------------|
| | A diameter | Specified | mm | 12,00 ± 12,02 |
| | | wear limit | | 12,04 |
| 175 L V | B diameter | Specified | mm | 11,98 ± 11,99 |
| 175 S | | | | |
| 175 SDB | | Wear limit | mm | 11,96 |
| | A-B play | Specified | mm | 0,01 ± 0,04 |
| | | allowance limit | | 0,06 |

TABLE No. 8

Principal data of rocker-arms and relative pivot pins.



COUPLING WITH BUSHING

| | | | |
|-------------|-------------|-------------------|------------------|
| ENGINE TYPE | A diameter: | } specified | mm 12.00 + 12.02 |
| | | } wear limit | mm 12.04 |
| 175cc L.V. | B diameter | } specified | mm 11.98 + 11.99 |
| 175cc S | | } wear limit | mm 11.96 |
| 175cc SDS | A-B play | } specified | mm 0.01 + 0.04 |
| | | } allowance limit | mm 0.06 |

COUPLING WITH ROLLERS

| | | | |
|-------------|-------------------|--------------|------------------|
| ENGINE TYPE | A diameter | } specified | mm 13.977+13.988 |
| 250cc S | | } wear limit | mm 14.01 |
| 250cc SDS | B diameter | } specified | mm 9.99 + 10.00 |
| | | } wear limit | mm 9.97 |
| | C roller diameter | } specified | mm 2.00 - |
| | | } wear limit | mm 1.98 |