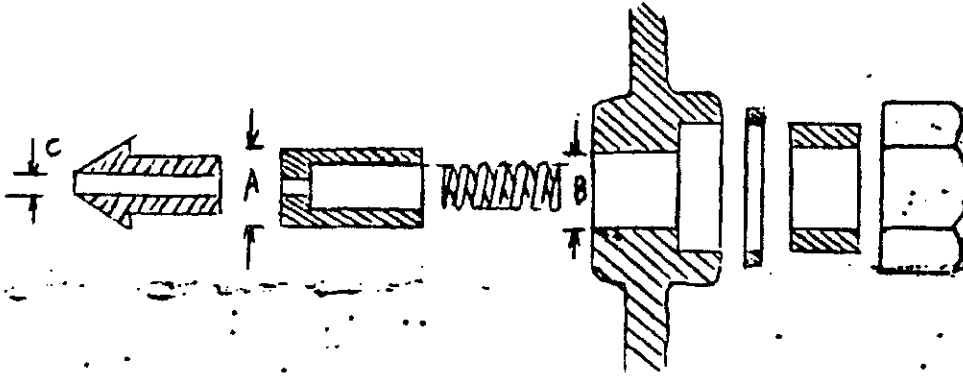


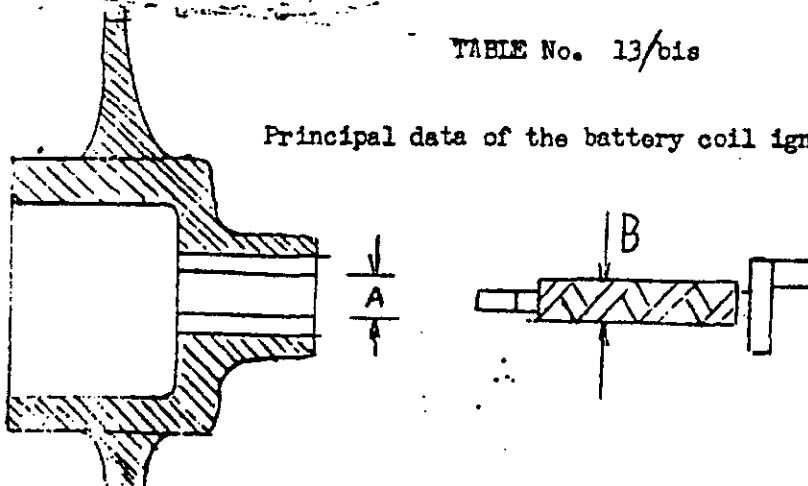
Principal data of the injector assembly.



| | | |
|---|--------------------|--------------------|
| Bushing A diameter; specified wear limits | 0,4712" & 0,4716" | 0,470" |
| B diameter of the seat in the cover specified wear limits | 0,4724" & 0,473" | 0,474" |
| Clearance between bushing and seat specified wear limits | 0,00078" & 0,0019" | 0,003937" |
| Injector C diameter; for bushing bearing of the conn-rod big end for roller bearing | | 0,1575" 0,1181" |

TABLE No. 13/bis

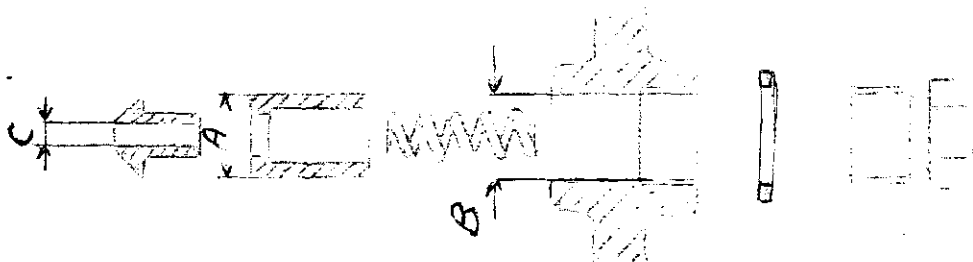
Principal data of the battery coil ignition:



| | | |
|--|---------------------|---------|
| A diameter of the left cover bushing specified wear limits | 0,5512" & 0,5515" | 0,5523" |
| Shaft B diameter : specified wear limits | 0,550" & 0,5507" | 0,549" |
| Clearance between bushing and pin A-B specified admitted limit | 0,00039" & 0,00118" | 0,0019" |

TABLE No. 13

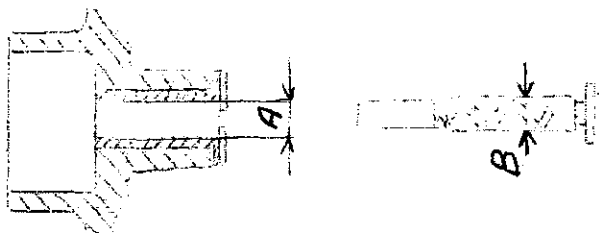
Principal data of the injector assembly



| | | |
|--|----|---------------|
| Bushing A diameter : specified | mm | 11.97 + 11.98 |
| wear limits | mm | 11.94 |
| B diameter of the seat in the cover specified | mm | 12.00 + 12.02 |
| wear limits | mm | 12.05 |
| Clearance between bushing and seat specified | mm | 0.02 + 0.05 |
| wear limits | mm | 0.10 |
| Injector C Diameter : for bushing bearing of the con-rod big end | mm | 4 |
| for roller bearing | mm | 3 |

TABLE No. 13 bis

Principal data of the battery coil ignition:



| | | |
|--|----|---------------|
| A diameter of the left cover bushing : specified | mm | 14.00 + 14.01 |
| wear limits | | 14.05 |
| Shaft B diameter : specified | mm | 13.98 + 13.99 |
| wear limits | mm | 13.96 |
| Clearance between bushing and pin A-B: specified | mm | 0.01 + 0.03 |
| admitted limit | mm | 0.05 |